



Änderung des Mailsendeverfahrens

Ab Montag, dem **02.02.2004** ist der eMail-Versand (SMTP) über unsere Mailserver nur noch durch gesicherte Authentifizierung möglich. Das alte Verfahren „SMTP-after-POP“ wird abgelöst.

Nachstehende Informationen sind sinngemäß auch im deutschen Outlook 2000 durchzuführen, damit Sie weiterhin wie gewohnt Mails versenden können. Bei Rückfragen zögern Sie nicht, uns zu kontaktieren.

Grundsätzliche Änderungen im Outlook:

- Verwendung der kompletten eMailadresse (incl. Domainname) als Username zur Abholung Ihrer Mails
- Aktivierung der SMTP-Authentifizierung
- Authentifizierung mit dem gleichen Usernamen (incl. Domainname) und Password wie zur Abholung der Mails

Während der Umstellungsphase gehen keinerlei Mails verloren. Auch Ihr Password ändert sich nicht.

Bei Rückfragen erreichen Sie uns unter den Ihnen bekannten Kontaktmöglichkeiten.

Illustrated guide to configure Microsoft Outlook 2000 to utilize SMTP Authentication

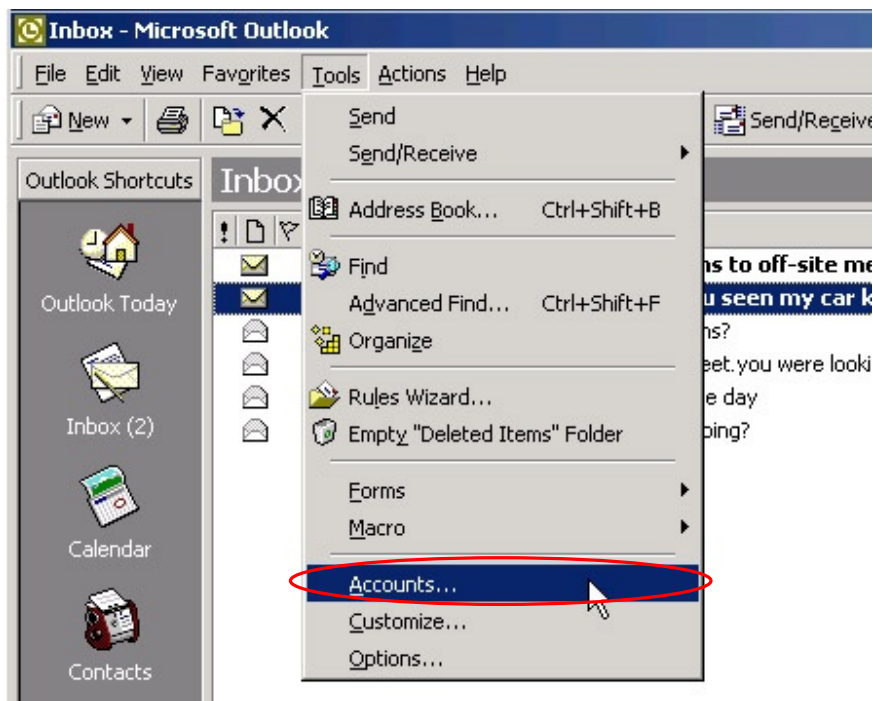
This illustrated guide provides instructions for configuring Microsoft Outlook 2000 to utilize SMTP Authentication. Performing these changes will not affect your ability to send or receive messages. SMTP Authentication is a more secure method of authentication, may reduce unsolicited messages, and prepares your client for the next generation messaging platform. Easy to follow, step by step instructions are provided below.



Step 1

Start your Microsoft Outlook 2000 client and click **Tools** from the menu bar at the top of the screen. Select **Accounts** from the drop down menu. (See Figure 1)

Figure 1

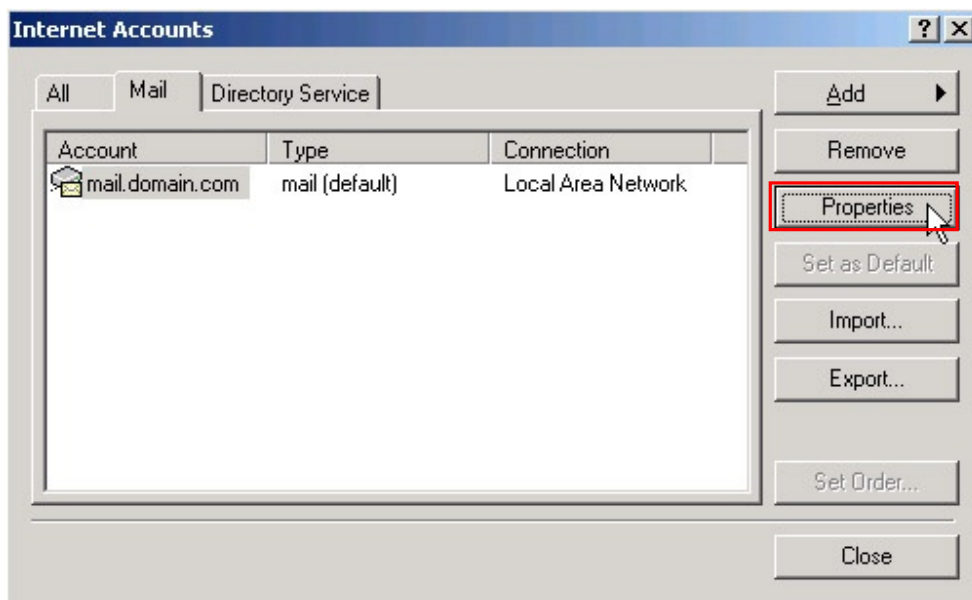




Step 2

Click on the **Mail** tab then highlight your E-mail account. Click the **Properties** button.
(See Figure 2)

Figure 2

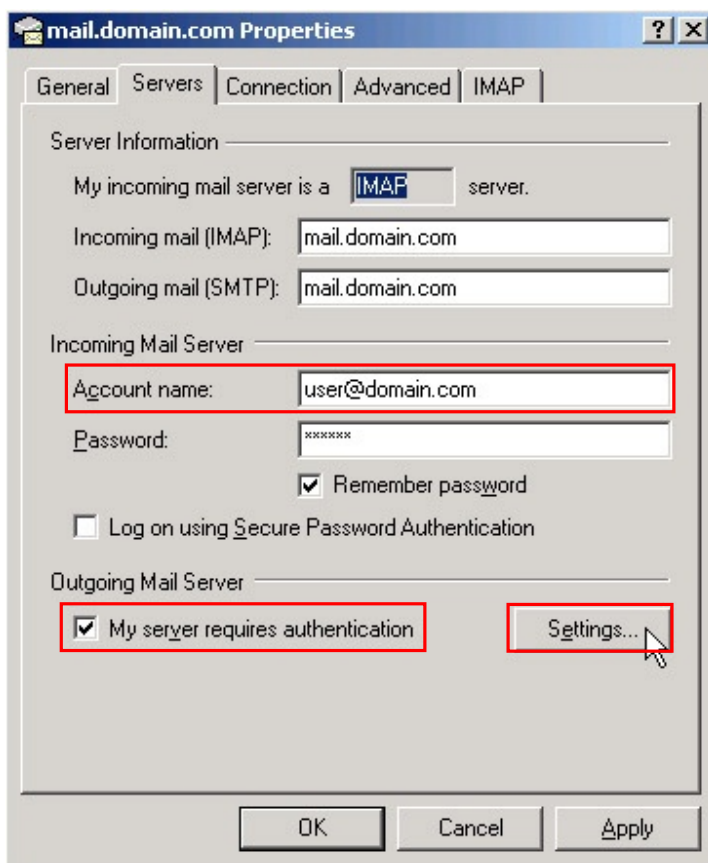




Step 3

Click on the **Servers** tab and type your full email address (example: user@domain.com) in the text field next to **Account name**. Click on the checkbox next to the description **My server requires authentication**. Click on the **Settings...** button to proceed to next step. (See Figure 3). Remember that instead if IMAP also POP3 can be used.

Figure 3



Did you know? - SMTP authentication is a more secure method of authentication compared to other methods such as check-before-send. Once SMTP authentication is enabled, the mail server will verify your login name and password credentials before sending each message. This prevents unauthorized use of your account.



Step 4

By default, the option button next to the description ***Use same settings as my incoming mail server*** should be selected. If it is not selected, please select it by clicking on the option button. Once completed please click the **OK** button. (See Figure 4)

Figure 4





Step 5

Click the **OK** button, and then click **Close**. Your client is now configured for SMTP Authentication. (See Figure 5 and 6). Remember again that instead if IMAP also POP3 is used.

Figure 5

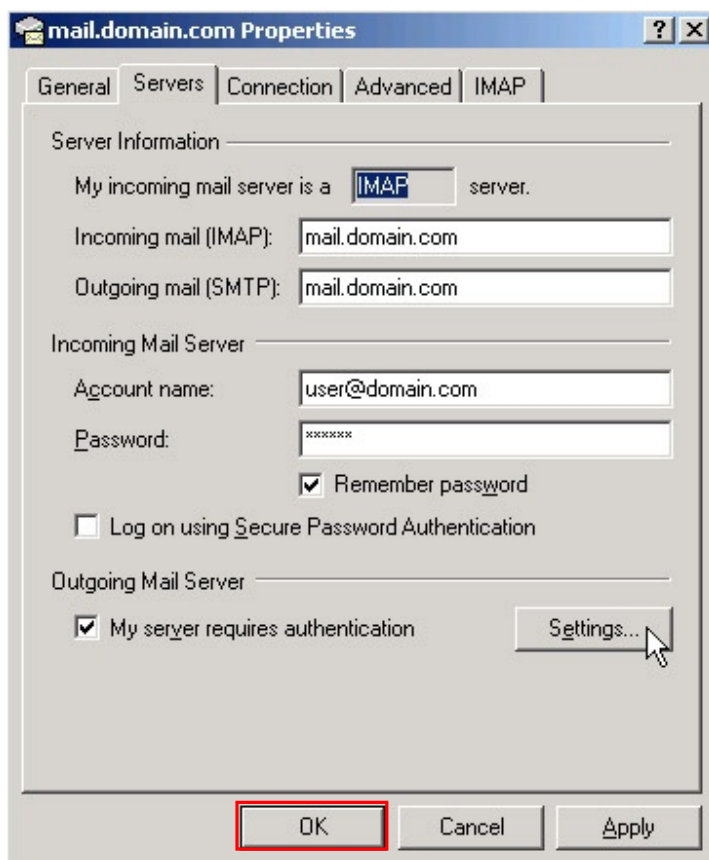
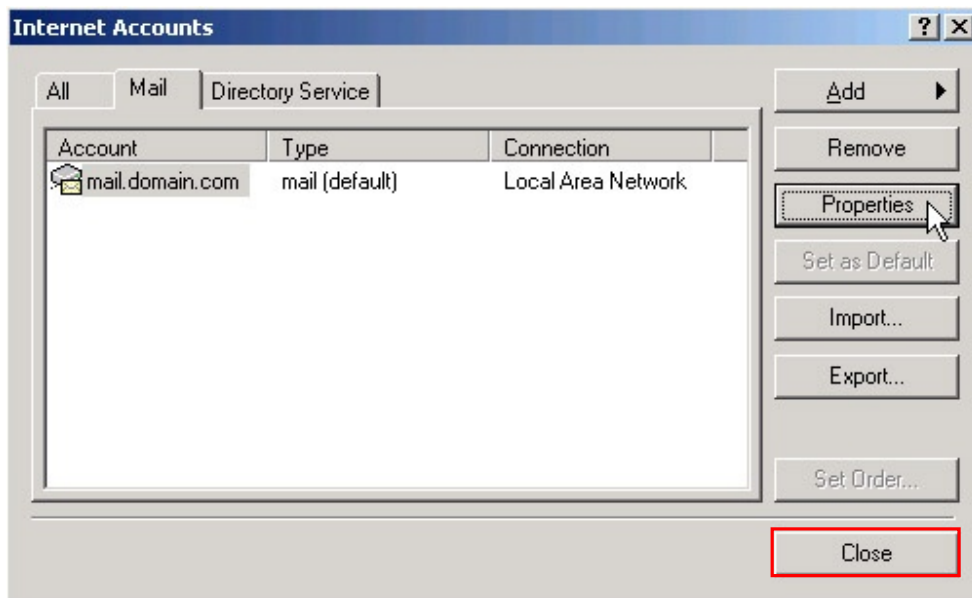




Figure 6





***POP3 Users Only* (Optional)**

We recommend disabling leave messages on server in order to preserve storage space. This will also reduce the potential risk of duplicate messages when your account is migrated to our new platform. Although it is not mandatory, we would highly recommend the configuration described below.

Under the **Advanced** tab, remove the checkmark next to the description **Leave a copy of messages on the server**. (See Figure 7 below)

Figure 7

